

# Fine Pitch LED Presentation Video Wall 138" | 165"

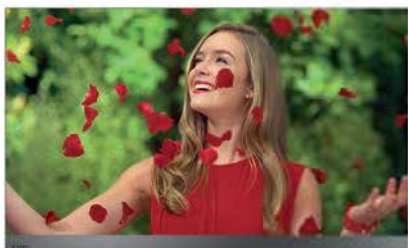


**ALL-IN-ONE  
1080p SOLUTION**



## Super Fine HD Pixel Pitch

All the screen sizes available have a full High Definition resolution and a standard 16:9 aspect ratio. This fine pixel pitch, combined with the advantage of not having any unsightly bezels, make these displays the ultimate in premium presentation video walls.



## All-in-One Meeting Room Display

The Fine Pitch LED Presentation Video Wall combines the best quality LED technology on the market with a sophisticated Android based PC. This provides an integrated solution for most cases without the need for messy cables or additional devices.



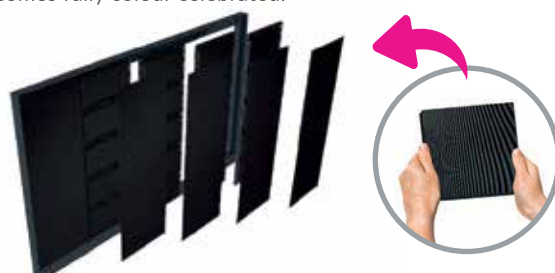
## Powerful Presentation Display

Designed with middle to large sized meeting rooms in mind this is the ultimate presentation tool. Wow attendees as you wirelessly mirror and file share between your devices and the presentation screen. Featuring easy access front ports for connecting your laptop, remote video conferencing and multi-window splicing for maximum user engagement.



## Easy installation

Installation of the Fine Pitch LED Presentation Video Wall is quick and easy thanks to its light and compact design. Unlike other LED Video Walls this solution is a complete out-of-the-box display so assembly is much easier than usual. It also comes fully colour celebrated.



## Other Features

### Adjustable Backlight

The Fine Pitch LED Presentation Video Wall is bright enough for all ambient lighting conditions, but the screen can be adjusted manually to suit user preferences. If your conference or meeting room is quite dark then you can reduce the backlight brightness to improve overall readability.



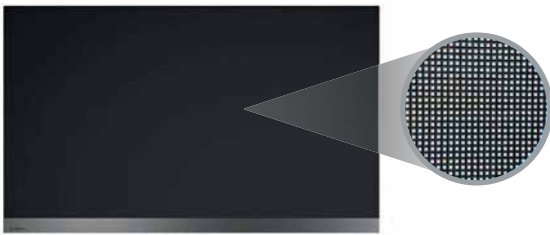
### Easy Front Maintenance

Through an intuitive and easy-to-use maintenance system the LED Video Wall can be serviced from the front of the display. The LED modules can be removed quickly and efficiently for convenient maintenance.



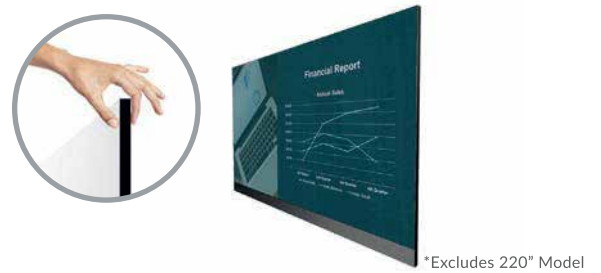
### SMD Technology

SMD (Surface Mounted Diode) LED technology is the optimum form for LED Video Walls. Combining three miniature LEDs of different colours in one unit enables fine pixel pitches with perfect colour uniformity.



### Lightweight and Slim Design

Despite their large size the Fine Pitch LED Presentation Video Wall has a compact design with a slim depth of just 38.5mm\* and a lightweight cabinet for reduced stress on the mounting wall.



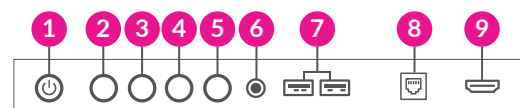
### Wide Viewing Angle

Thanks to the LED technology these displays provide fantastic image quality with a remarkable viewing angle of 160°.



### Easy Access Front Ports and Controls

The Fine Pitch LED Video Wall has a variety of easy to access controls and ports on the front of the display including a HDMI and 2 x USB ports.



- 1** Power Switch
- 2** Switch Signal
- 3** + Brightness
- 4** - Brightness
- 5** Standby
- 6** Audio Out
- 7** USB x 2
- 8** LAN\*
- 9** HDMI\*

\*On underside of display

### Advertising Display Functionality

Although it's designed as a presentation solution, this LED Video Wall can also be used as an indoor LED advertising display thanks to the built in Android PC.



### Optional Floor Stand

If you do not have the desired wall space available an optional floor stand can be included to mount the LED Video Wall on.



# Other Features



SMD TECHNOLOGY



SLIM/LIGHTWEIGHT DISPLAY



RUGGED ENCLOSURE



PRE COLOUR CALIBRATED

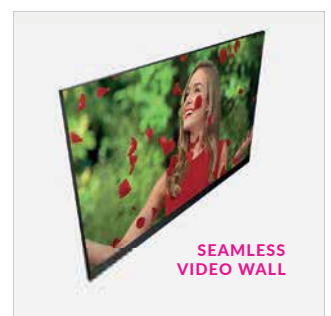
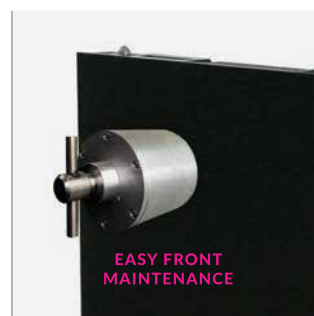
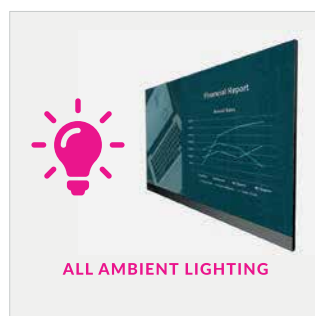
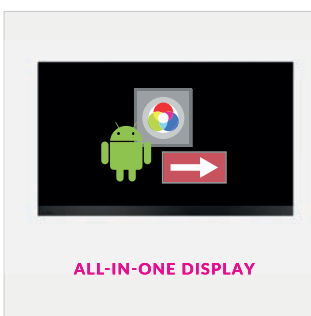


HD DISPLAY

EASY ACCESS FRONT PORTS

SEAMLESS VIDEO WALL

BUILT IN ANDROID



# Specification Table

		138 inch	165 inch
LED	Pixel Pitch (mm)	1.5	1.9
	Resolution	1920x1080	
	Display Area (mm)	3050x1716	3660x2059
	Aspect Ratio	16:9	
	Brightness (cd/m <sup>2</sup> )	100~500	100~600
	Refresh Rate (Hz)	1920~3840	
	Grayscale	14 Bit	
	Viewing Angle	160°	
	Contrast Ratio	5000:1	
	Maintenance	Front Access Only	
AV Inputs	Front Inputs	USB x 2, HDMI	
	Input Voltage	AC110~240V (50Hz~60Hz)	
Power	Average Power Consumption	1,020W	1,040W
	Maximum Power Consumption	3,000W	3,060W
Mechanical	Unit Size (WxHxD mm)	3063x1846x38.5	3673x2189x38.5
	Package Size (WxHxD mm)	TBC	TBC
	VESA Holes (mm)	600x600/600x800	800x600
	Net Weight (kg)	201	282
	Gross Weight (kg)	TBC	TBC
Environmental	Operating Temperature	-10°C to 40 °C	
	Operating Humidity	10% to 85%	
	IP Rating	IP30	
Computer	CPU	ARM Cortex A72, Cortex A53, 2.0GHz	
	GPU	ARM Mali-T860 MP4	
	Memory	DDR3 2G, 4G	
	Storage	eMMC 8G	
	LAN	100M/1000M	
	Wi-Fi	802.11ac	
	OS	Android 7.1	
Accessories	Included	TBC	
	Optional	Floor Stand	
Warranty	Warranty Period	3 Year Warranty	
	Technical Support	Lifetime	



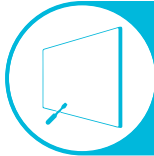


## Why Choose Us?



### Lifetime Technical Support

From the moment you receive your product, throughout the duration of your warranty and even after your warranty has expired we are here to support you. If you require any assistance setting up or using your product, or have any problems at all, we can provide free technical support via telephone and email.



### On-site Support and Maintenance\*

If needed, we can provide an installation service for any of our products. We can also set up service-level agreements for larger projects that require maintenance contracts.



### Extended Warranty\*

All of our commercial display products come with a 3 year commercial warranty as standard but if you want to extend this you can upgrade this to cover a 5 year period at point of purchase.



### Training

As well as providing free remote CMS training sessions and webinars we can also visit you to deliver bespoke training for our software and hardware\*.



### Advanced Replacements†

Should your display suffer from any kind of hardware failure during the warranty period we will send you an advanced replacement and arrange for your old display to be collected, free of charge. This ensures no downtime where you are without a screen.



### Custom Product Testing & Configuration

If you need us to test third party software or a website, or configure your screen in a particular way before it is dispatched (e.g. in a particular orientation or network mode), we can do so to make your life easier.



### 3D Rendering

Want to know how a particular screen will look once installed? Send us a photo of the location and we will create a 3D rendering of any screen in situ to help you to visualise how amazing it will look.



### Logistics Support

We hold more stock in our UK warehouse than any other manufacturer so we can help you meet tight deadlines. For last minute orders we can also offer special express or morning delivery options\*. We also carry out UK based quality control checks on every display before it leaves our warehouse.



### Project Support

If you need to loan a sample unit to test we'd be more than happy to arrange this. We can also provide a rental service for temporary projects\*.



### Customisation\*

Your display can be customised to suit your requirements by adding your logo or printed graphics or even tailoring the colour of a display. We can also carry out hardware modifications to existing products or manufacture bespoke solutions for special projects.



### Extras\*

As well as being able to provide accessories and add-ons, such as extra remote controls, NUC PCs and video wall controllers, we can also supply custom made flight cases which are great if a display needs to be moved safely from place to place.

†UK mainland only

\*These particular services may incur additional charges